

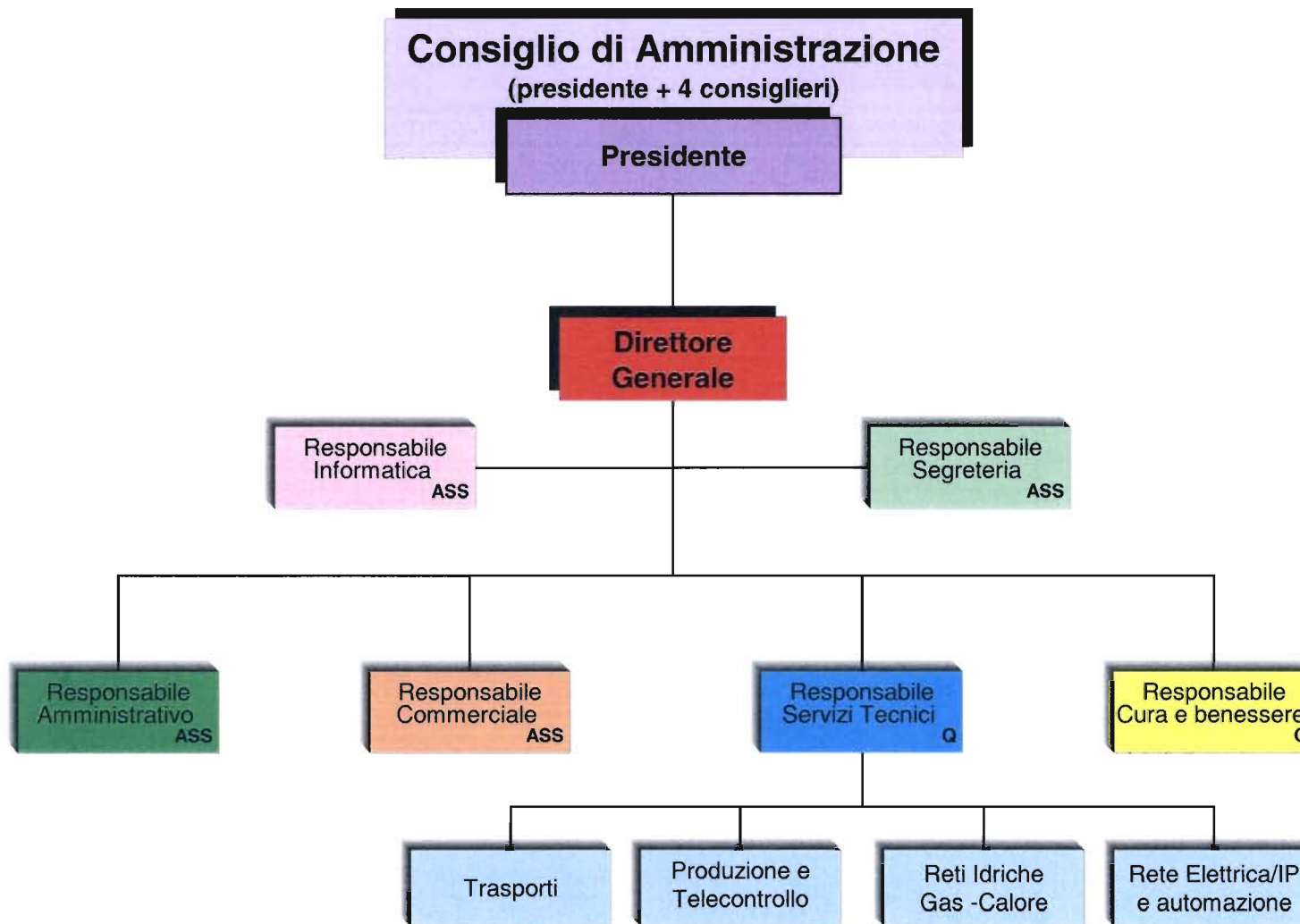


**BUDGET PREVISIONALE 2008**

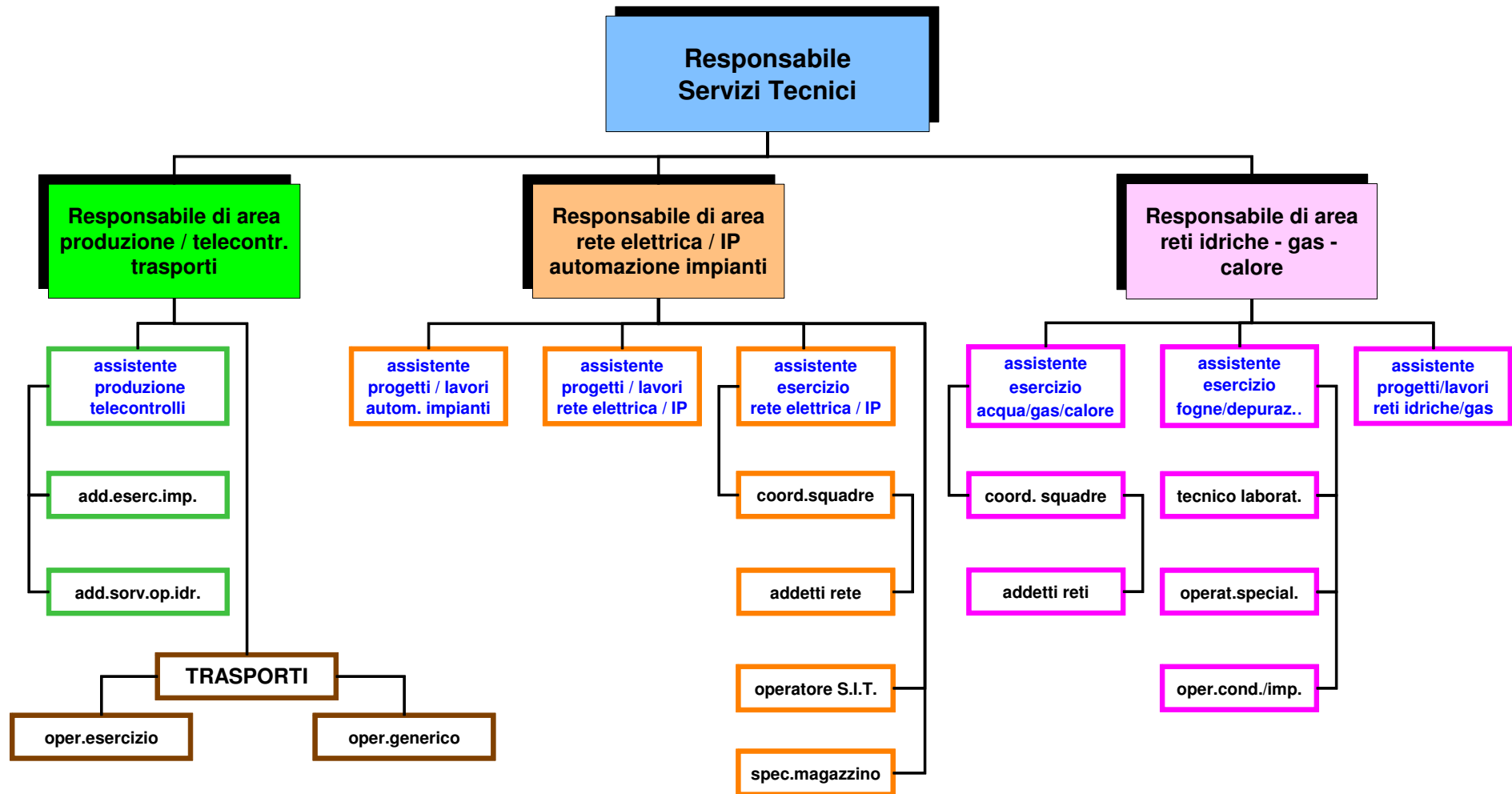
**28 giugno 2008**

**Organigramma aziendale**

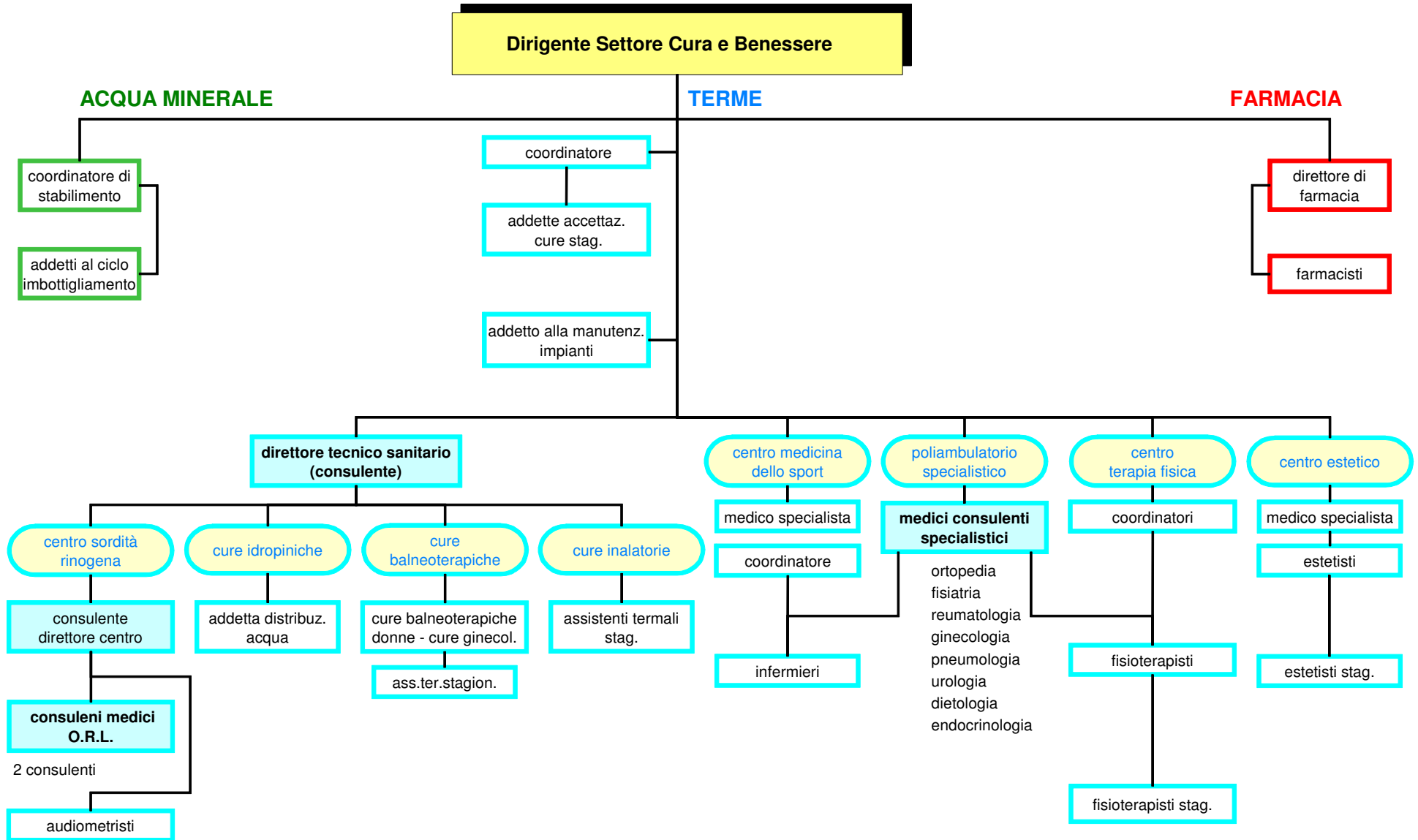
**Pagg. da 28 a 31**



**ORGANIGRAMMA SETTORE TECNICO**



# ORGANIGRAMMA SETTORE CURA E BENESSERE



**ORGANIGRAMMA SERVIZI CENTRALIZZATI**

